

8"

SUPERIOR 850

AT A GLANCE



SIZE
222 - 270mm
(8 3/4" - 10 5/8")



SHANK
QL80

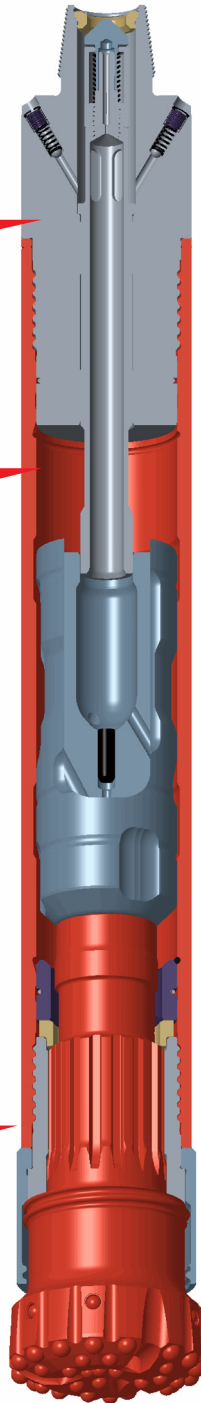


AIR PRESSURE
100 - 507psi
(7 - 35 bar)

Variable bypass porting has been added to the top adaptor

A variable live air bleed to allow greater additives to increase up-hole velocity.

The Bit Catcher System has a specially designed chuck and drill bit arrangement.



SUPERIOR 850

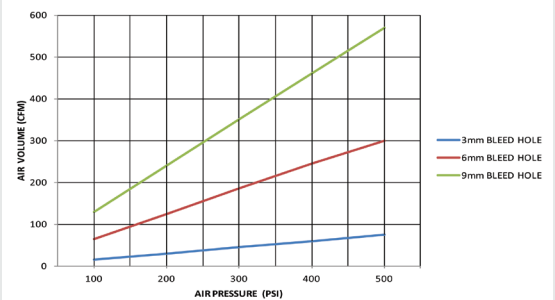
The Superior 850 has been designed for high performance drilling in hard to medium rock conditions.

Research shows that Air Drilling can help achieve lower drilling costs, faster drill rig installation, an increased rate of penetration (ROP) with a ROP up to 5 times faster than mud, reduced hole deviation and effective pressure control through lost circulation zones.

Design features include a jetted back head, a variable air bleed piston and a bit catcher system to ensure your bits are not lost down the hole and diamond enhanced inserts.

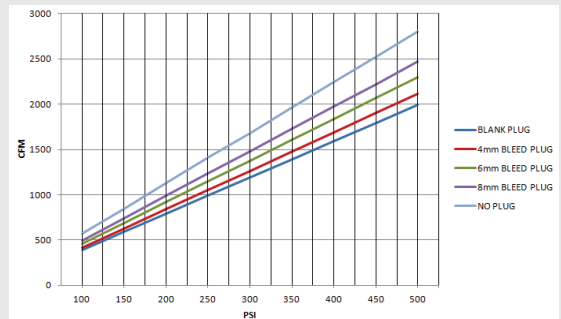
Air Consumption

Bypass Top Adaptor



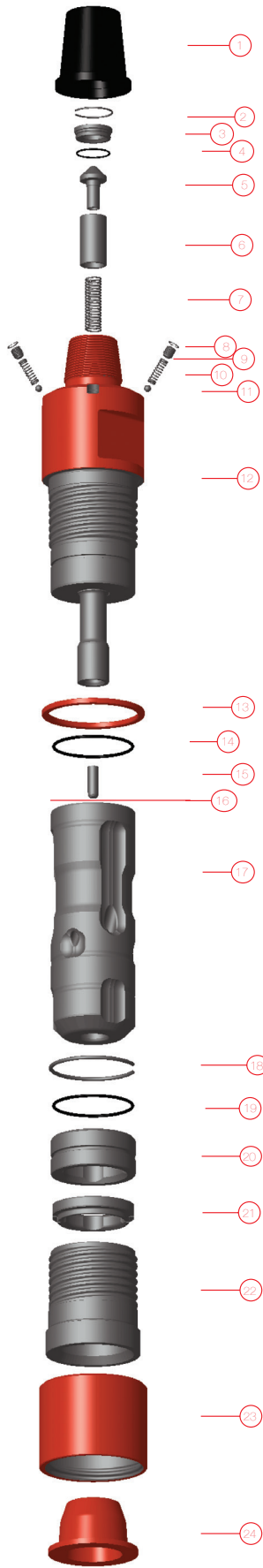
Note: The air volumes quoted above are based upon one bleed plug.

Hammer



Figures are based on theoretical data.

UNITED KINGDOM
Halco Rock Tools Limited
Armytage Road, Brighouse
West Yorkshire
Tel: +44 (0)1422 399900
www.halcorocktools.com



Hammer Overview

Hammer Type	Superior 850
Top Thread	4 1/2" API Reg Pin
Flat Hammer Size	125mm (4.921")
Weight	210 Kg
Outside Diameter	192mm (7.559")
Make Up Length	1281mm (50.433")
Recommended Minimum Thrust	500 Kg (1100 lbs)
Recommended Maximum Thrust	2000 Kg (4400 lbs)

Parts List

Hammer Type	Superior 850	Maintenance Kits		
		Service Kit	Repair Kit	Life Kit
Shank	QL80	SK90	RK147	LK11
Model Number	600433			
Item	Description			
1	Thread Protector	-	-	-
2	Snap Ring	1	1	-
3	N.R.V. Seat	-	1	-
4	O'Ring	2	2	-
5	N.R.V	-	1	-
6	N.R.V. Cover	-	1	-
7	N.R.V. Spring	-	1	-
8	Circlip	-	4	-
9	Bleed Plugs	-	4	-
10	Bypass Spring	-	4	-
11	Ball Bearing	-	4	-
12	Top Adaptor	-	-	1
13	Spacer	-	1	-
14	O'Ring	2	2	-
15	Bleed Plug	-	1	-
16	Cylinder	-	-	1
17	Piston	-	-	1
18	Snap Ring	1	2	-
19	O'Ring	2	2	-
20	Guide Bush	-	-	-
21	Bit Retaining Ring	-	1	-
22	Chuck	-	1	-
23	Shroud	-	-	-
24	End Cap	-	-	-

Drill Bits

Part Number	Diameter mm	Diameter Inch	Face Design	Type	Buttons Qty / Dia	Over Size	Weight (Kg)
QL 80							
653517	8 3/4		Concave	Diamond	24x 18mm / 15x 22.2mm		70
653519	9 7/8		Concave	Diamond	26x 18mm / 15x 22.2mm		80

Additional drill bit configurations are available upon request.

